

# 国外幼儿园实例（1）

# Mothers' Club Family Learning Center

规模：80人

建筑面积：1000 M<sup>2</sup>

建成：2005年

地点：加利福尼亚，美国

设计：Harley Ellis Devereaux

总造价：300万美元

走廊与教室的关系



入口



# 教室



# 教室



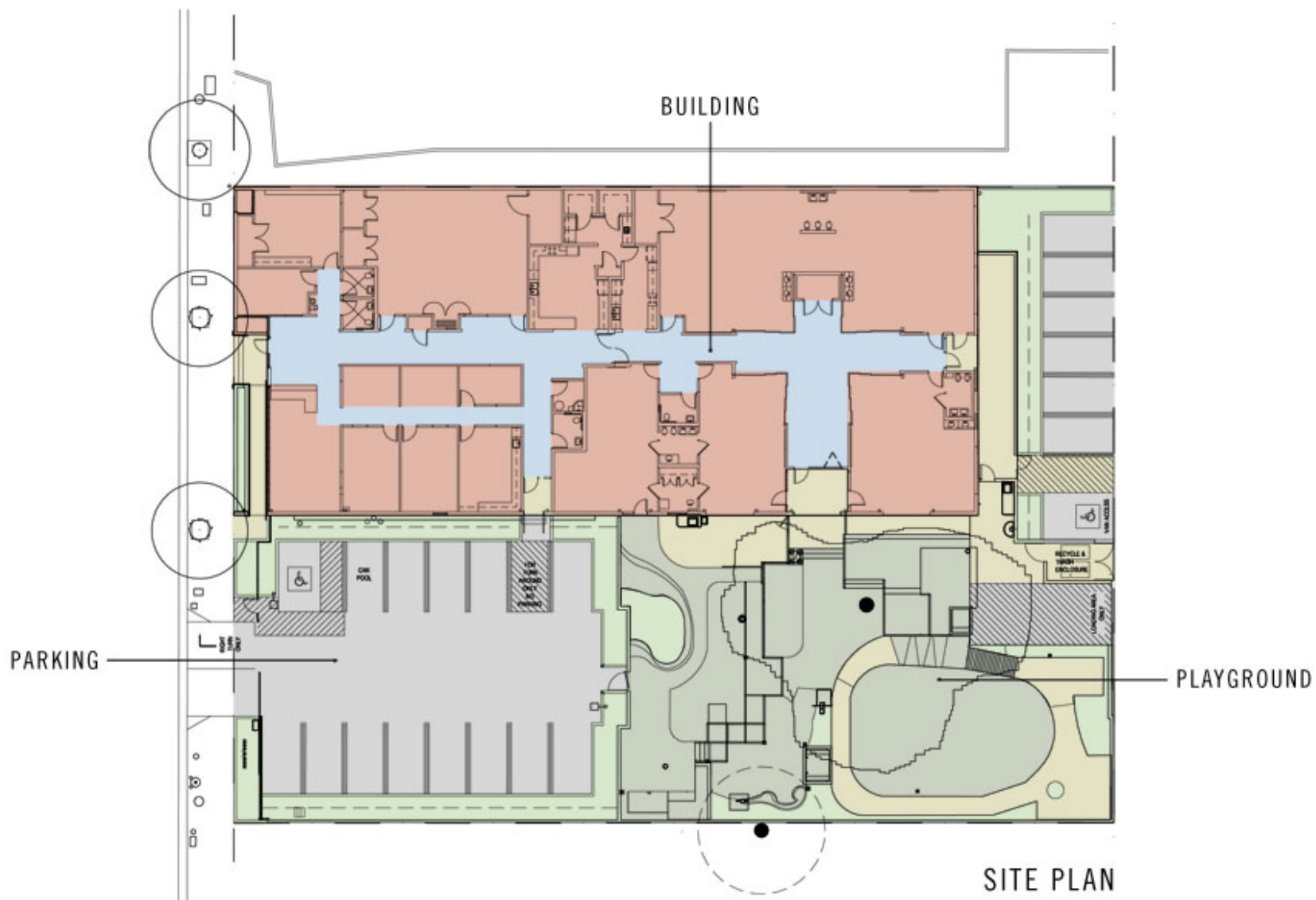
## 连接儿童区和成人区的走廊



# 户外学习空间

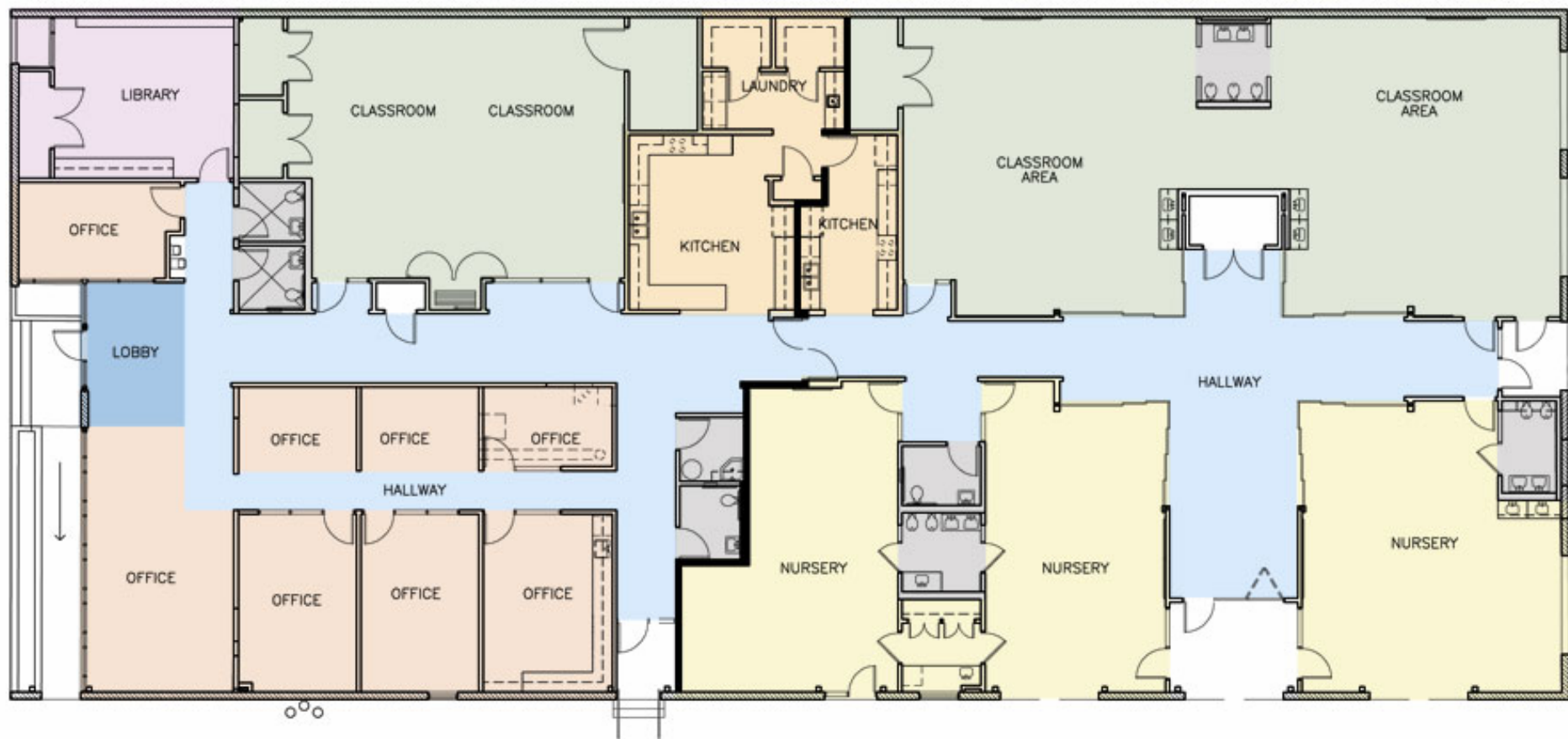


# 总平面图





# 平面图



FLOOR PLAN

# 立面图



WEST ELEVATION



EAST ELEVATION



SOUTH ELEVATION



NORTH ELEVATION

# 轴测图

## IEQ

Skylights and Clerestories provide daylight to more than 75% of occupied spaces.

Low emitting paints, adhesives, sealants and carpeting employed.

## Materials

75% of the Existing Building's Structure is being reused and incorporated into the new project.

High recycled content materials and locally sourced materials used wherever possible.

## Site

Easily Accessed by Public Transportation

Open Space maximized with Children's Outdoor Learning Center

Stormwater Management  
Pervious Concrete Paving in Parking Area; Permeable Surfaces in Play Areas permitting storm water percolation

Specialty hardscape and roofing material reduce heat absorption and reduce heat island effect.

## Energy

18 KW Photovoltaic System will provide more than 20% of the Facility's power requirements.

Energy Modeling tools have helped to reduce energy consumption by 30% below Title 24 base line.

## Water

Water efficient landscaping incorporating native species will reduce use of potable water for irrigation by 50%

Water efficient fixtures inside will reduce use of potable water by 8% below base line of Energy Policy Act

# Sustainable Features

# ADHARSHILA VATIKA

规模：90人

建筑面积：1200 M<sup>2</sup>

建成：2006年

地点：新德里，印度

设计：SPACES ARCHITECTS

总造价：120万美元

# 总平面和立面



SOUTH-WEST ELEVATION



EAST ELEVATION



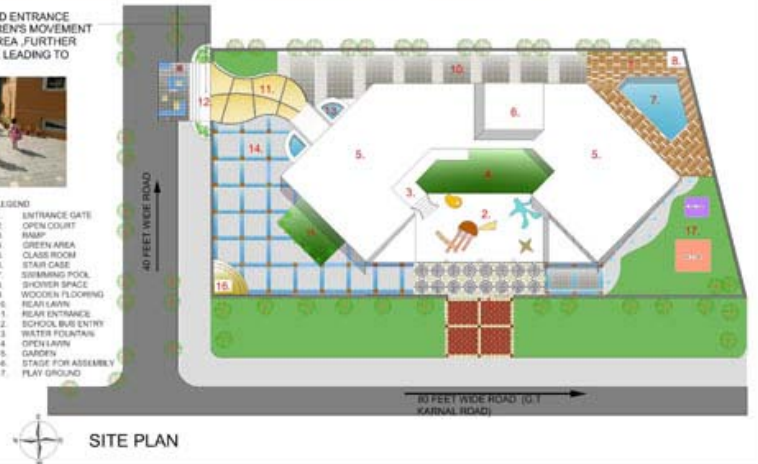
SOUTH-EAST ELEVATION

CHILDREN'S ENTRY IS KEPT FROM SIDE ROAD ENTRANCE WHERE THE ROAD TRAFFIC IS LESS. CHILDREN'S MOVEMENT IS MONITORED THROUGH THE RECEPTION AREA. FURTHER SIDE CORRIDOR LEADS THEM TO STAIRCASE LEADING TO CLASSROOMS.



- LEGEND
1. ENTRANCE GATE
  2. OPEN COURT
  3. RAMP
  4. GREEN AREA
  5. CLASS ROOM
  6. STAIR CASE
  7. SWIMMING POOL
  8. SHOWER SPACE
  9. WOODEN FLOORING
  10. REAR LAYIN
  11. REAR ENTRANCE
  12. SCHOOL BUS ENTRY
  13. WATER FOUNTAIN
  14. OPEN LAYIN
  15. GARDIN
  16. STAGE FOR ASSEMBLY
  17. PLAY GROUND

A KINDERGARTEN SCHOOL SETS ITSELF APART BY USE OF BASIC FORMS AND COLOURS COMPOSED TOGETHER TO ACHIEVE A BUILDING FORM. A CONTEMPORARY BUILDING BLOCK SERVES AS AN EDUCATIONAL TOOL FOR CHILDREN'S. FURTHER EXTENDS TO INTERIOR SPACES.



SITE PLAN

# 户外开放空间



**COURTYARD VIEW FROM LANDING**  
USE OF MATERIAL CREATES TRANSITION BETWEEN DIFFERENT SPACES AS IN FRONT COURTYARD COLORFUL ABSTRACT SHAPES CREATES VISUAL DELIGHT



**COURTYARD VIEW FROM FIRST FLOOR**



**COURTYARD VIEW FROM ENTRANCE**



**CHILDREN'S PLAYING IN OPEN AREA**

THE OPEN AREA AT THE SIDE ENTRANCE IS USED FOR RECREATIONAL ACTIVITIES  
THE SPACE WITH STAGE USED AS A DUAL PURPOSE FOR MORNING PRAYER AS WELL AS CULTURAL ACTIVITIES.FURTHER A GREEN AREA IS SPECIALLY LIKED BY CHILDREN'S  
THE PIPE USED ALONG IT AND BOUNDARY WALL HELPS CHILDREN'S WHILE SKATING



THE BUILDING PLAN WHICH IS HEXAGONAL SHAPE ENCLOSE AN OPEN COURTYARD WHICH ACTS AS A SECURED SPACE FOR CHILDREN'S TO PLAY.MOTHER- CHILD JAND THEIR ACTIVITIES CAN BE VIEWED FROM ALL THE ROOM OVER-LOOKING IT.

# 玩耍空间和泳池



**PLAY AREA**  
PLAYAREA IS LINKED TO ACTIVITY ROOM THROUGH STEPS.



**VIEW THROUGH ACTIVITY ROOM**  
BIG GLASS WINDOWS AND DOORS PROVIDE VISUAL LINK BETWEEN EXTERIOR AND INTERIOR SPACES



**SWIMMING POOL AREA**



# 外观和开放空间



**COURTYARD VIEW FROM LANDING**  
USE OF MATERIAL CREATES TRANSITION BETWEEN DIFFERENT SPACES AS IN FRONT COURTYARD COLORFUL ABSTRACT SHAPES CREATES VISUAL DELIGHT



**COURTYARD VIEW FROM FIRST FLOOR**



**COURTYARD VIEW FROM ENTRANCE**

THE BUILDING PLAN WHICH IS HEXAGONAL SHAPE ENCLOSE AN OPEN COURTYARD WHICH ACTS AS A SECURED SPACE FOR CHILDRENS TO PLAY/MOTHER, CHILD AND THEIR ACTIVITIES CAN BE VIEWED FROM ALL THE ROOM OVER-LOOKING IT.



**CHILDREN'S PLAYING IN OPEN AREA**

THE OPEN AREA AT THE SIDE ENTRANCE IS USED FOR RECREATIONAL ACTIVITIES THE SPACE WITH STAGE USED AS A DUAL PURPOSE FOR MORNING PRAYER AS WELL AS CULTURAL ACTIVITIES.FURTHER A GREEN AREA IS SPECIALLY LINED BY CHILDRENS THE PIPE USED ALONG IT AND BOUNDARY WALL HELPS CHILDRENS WHILE SKATING





# 园长室和接待室



RECEPTION ROOM



AN ENVIRONMENT HAS BEEN CREATED FOR CHILDREN'S AND PARENT'S. GEOMETRIC FORMS, COLORS PREDOMINATES THE DESIGN. ANTI-SKID TILES ARE USED FOR CHILDREN'S SAFETY. ELEMENTS ON WALL AND CEILING ARE USED TO DISPLAY SOFT TOYS, ARTWORK IN FORM OF CARTOONS CHARACTER. PAINTING HAS BEEN USED EXTENSIVELY ADDING TO ENVIRONMENT.



PRINCIPAL ROOM



TOILET

PASTEL COLOR TILES HAS BEEN USED IN TOILETS TO CREATE CHEERFUL SPACE

PRINCIPAL ROOM IS IN CONTRAST TO SPACES IN SCHOOL WITH USE SIMPLE FORMS AND COLORS USED ON WALLS AND CEILING REFLECTING ITS CHARACTER

## LEGEND

1. COURTYARD ENTRANCE
2. PRINCIPAL ROOM
3. TOILET
4. ACCOUNTS SECTION
5. RECEPTION ROOM
6. SIDE ENTRANCE
7. CLASS ROOM - 1
8. STAIR CASE
9. CLASS ROOM - 2
10. ACTIVITY ROOM
11. FIRE STAIR CASE
12. RAMP



LAYOUT PLAN - GROUND FLOOR



# 活动室和教室



CLASSROOM-1



COLORFUL ABSTRACT VINYL FLOORING COMPLIMENTS TO COLORFUL ELEMENTS ON WALL MOUNTED FLAGS OF DIFFERENT COUNTRIES HELP IN CREATING ENVIRONMENT TO EDUCATE CHILDREN'S



ACTIVITY ROOM



TOILET



THE WALLS IN ACTIVITY ROOM HAVE COLORFUL DISPLAY OF ALPHABETS, JUNGLE BOOK. EACH SPACE IS DESIGNED ON ITS FUNCTION AND UTILITY.



# 1F 走廊



CORRIDOR CONNECTING CLASSROOMS HAS MULTIPLE CIRCULAR ELEMENTS PAINTED IN SHADES OF YELLOW PLACED AT DIFFERENT ANGLES CREATING AN INTERESTING VISUAL ELEMENT WITH CHECKERED BLUE TILES ON FLOOR. THE CORRIDOR ACTS AS AN INTERACTIVE TRANSITIONAL SPACE WHERE CHILDREN IDENTIFY WITH.



THE CEILING IS IN FORM OF ANGLED COLOURED PANELS WITH PERFORATION AS IS USED AS AN ELEMENT TO COVER UP A/C DUCT. THE CLASSROOM HAS BIG GLASS WINDOWS FACING CORRIDOR WHICH ACTS AS A VISUAL LINK BETWEEN CHILDREN'S.



# 医务室和教室



**CLASSROOM 3**

THE CLASSROOMS HAS A CURVED WALL WITH ELLIPTICAL NICHS HAVING PEBBLES CONTINUES TO TO CURVED SHAPE OF CEILING THE CURVED SHAPE GIVES FREE FLOW OF MOVEMENT. LAYOUT HAS BEEN KEPT FLEXIBLE SO THAT FURNITURE CAN BE MOVED AROUND TO BREAK THE MONOTONY OF EVERYDAY CLASSROOM.

PIGEON HOLES HAVE BEEN PROVIDED IN ALL THE CLASSROOMS AS THEY GIVE SPACE IDENTITY TO CHILDREN.



**MEDICAL ROOM**



**TOILET**

MEDICAL ROOM HAS BEDS FOR MEDICAL ATTENTION OF CHILDREN



**LAYOUT PLAN - FIRST FLOOR**

# 医务室和音乐·舞蹈室



**MEDIA ROOM**



THE MEDIA ROOM HAS FLEXIBLE LAYOUT OF CHAIRS WHEREIN THEY CAN BE PLACED IN ROWS AS WELL AS PLACED ALONG THE WALL AND CHILDRENS CAN USE THE SPACE FOR DANCING

COLORS PLAYS AN IMPORTANT ROLE IN CHILDRENS DEVELOPMENT AS THEY STIMULATE THEIR THOUGHT PROCESS. IT FORMS BASIS OF LIKES AND DISLIKES IN TERMS OF PERCEIVING COLORED THINGS. AN ATTEMPT HAS BEEN DONE TO USE LOT OF PASTEL SHADES WITH CONTRASTING SCHEMES. BRIGHT COLORS HAVE BEEN AVOIDED AS THEY TEND TO OVERSHADOW SURROUNDINGS.



**CLASSROOM 4**  
THE CLASSROOM HAS GEOMETRIC FORMS ON CEILING HIGHLIGHTED BY COVE-LIGHTING



MUSIC/DANCE ROOM IS USED FOR PRAYER MEETING & BANNERS



**MUSIC/DANCE ROOM**



# 1F的趣味走廊



DOOR TO CHILDREN'S SCALE NEXT TO MAIN DOOR



ELLIPTICAL PERFORATE WINDOWS FORMS AN INTERESTING ELEMENT IN THE CORRIDOR FOR CHILDRENS



FLOORING THROUGHOUT IS EMPHASIZED BY USE OF DIFFERENT MATERIALS ACTING AS A GOOD TRANSITIONAL SPACE IN THE CORRIDOR FURTHER MERGING WITH THE OVERALL AMBIENCE OF THE CLASSROOMS



AN ATTEMPT HAS BEEN DONE BY USE OF DIFFERENT TREATMENT HELPING CHILDRENS IN IDENTIFYING SPACE.



THE PASSAGE HAS INTERESTING VISUAL EFFECTS WITH ONE WALL PAINTED IN JUNGLE BOCK CHARACTERS WITH TREE BRANCHES CONTINUING TO CEILING.



# 夜景



# The Children's School

规模：120人

建筑面积：1500 M<sup>2</sup>

建成：2007年

地点：康涅狄格州，美国

设计：Maryann Thompson

总造价：满足业主要求



入口



# 东侧外观和剖面图



## 东侧内部



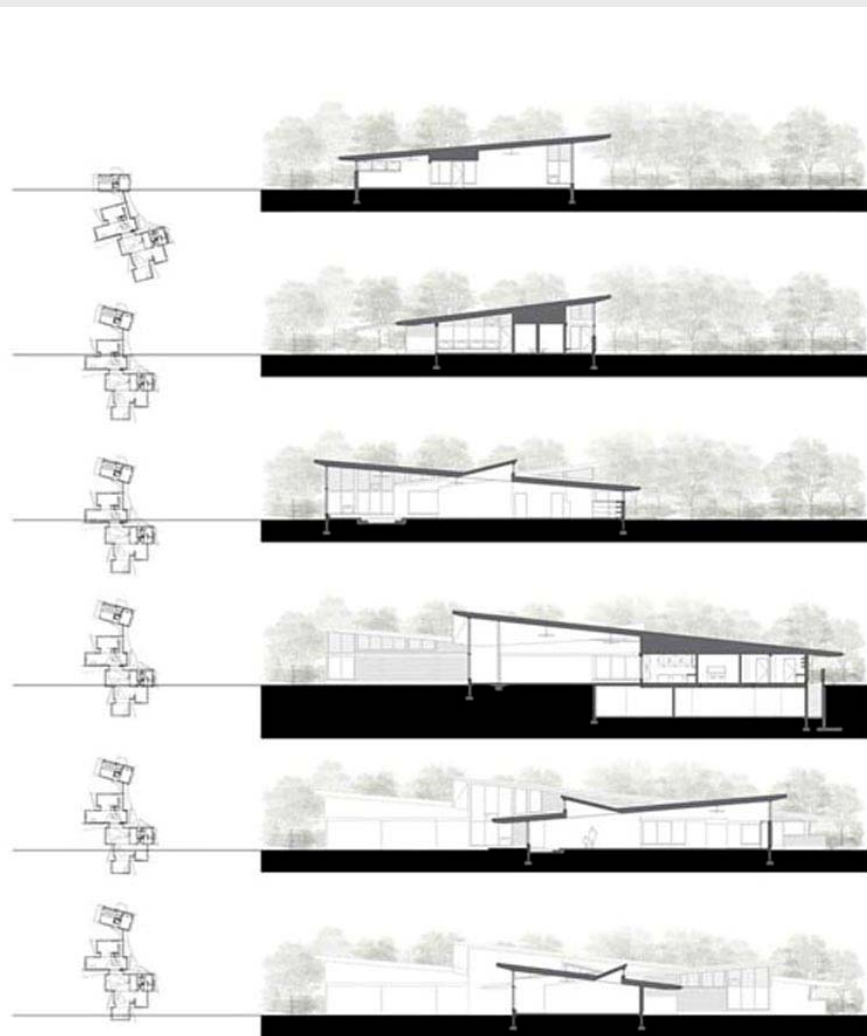
# 西侧内部



# 图书室



# 科学园地和剖面图



# 总平面



# 平面图





# Oswego Early Childhood Center

规模：600人

建筑面积：3900 M<sup>2</sup>

建成：2006年

地点：伊利诺斯州，美国

设计：DLR Group

总造价：710万美元

# 主入口



# 活动室



# 教室



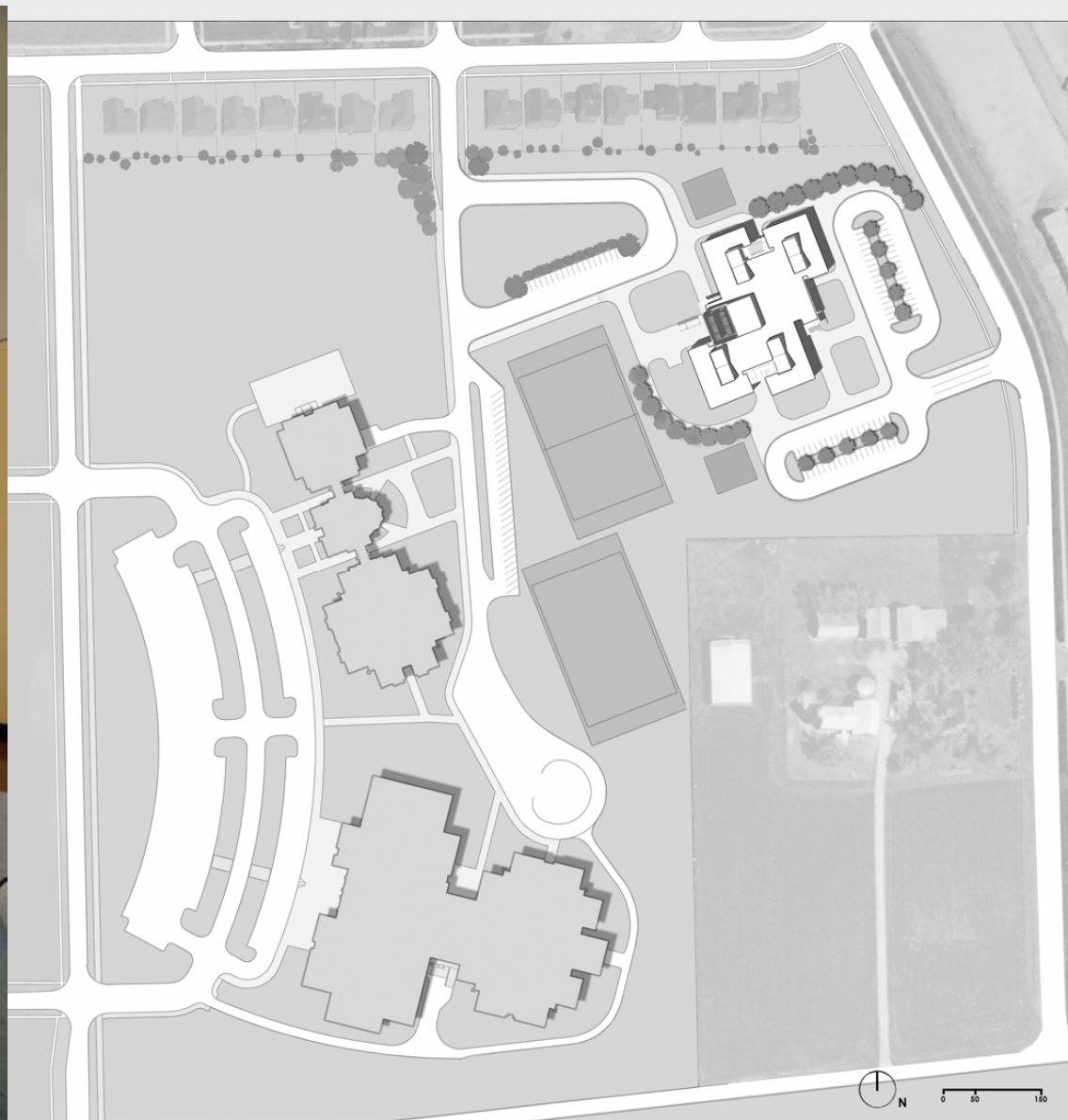
# 室外庭院



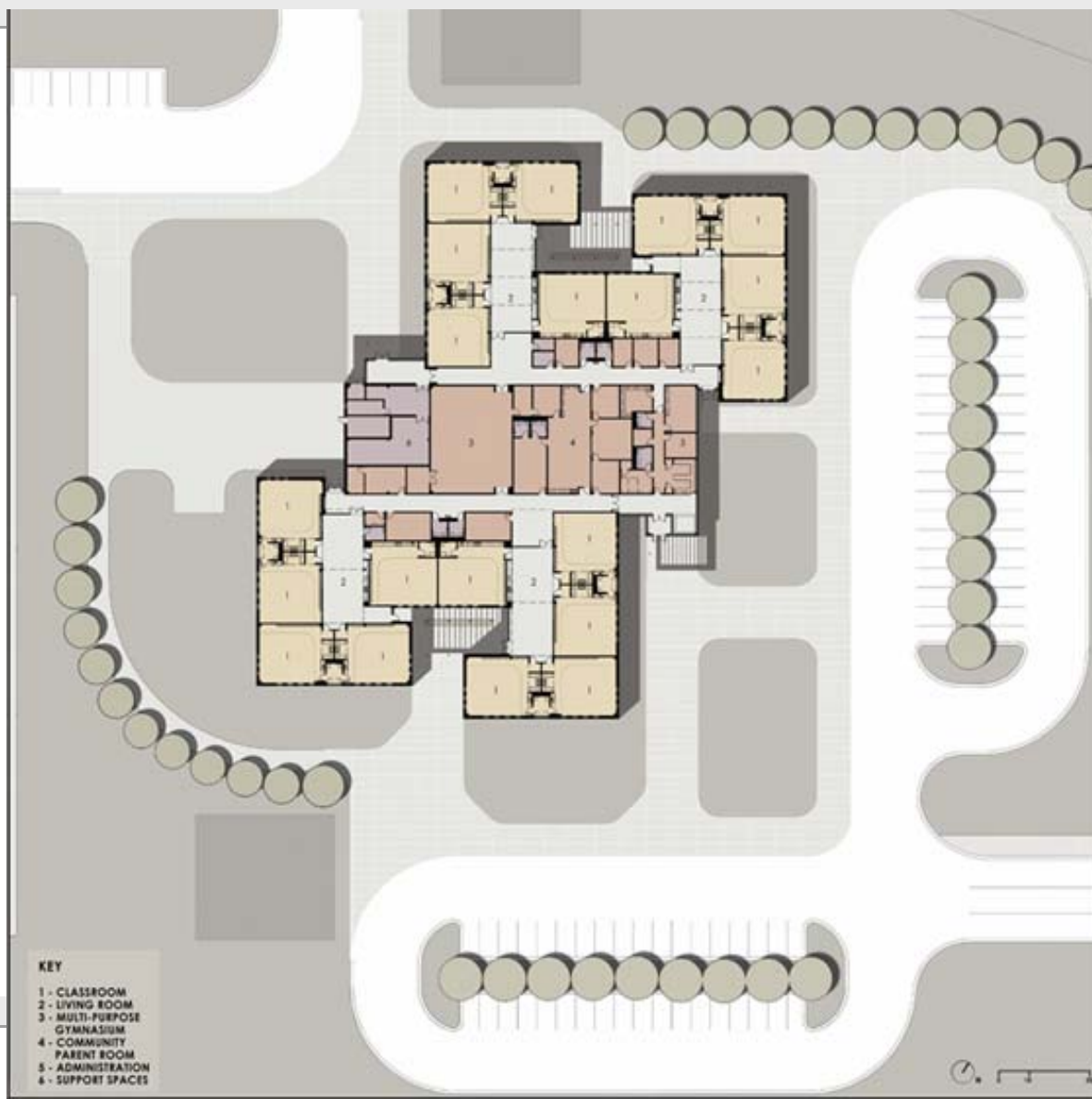
# 大型技巧活动室



# 活动室和总平面

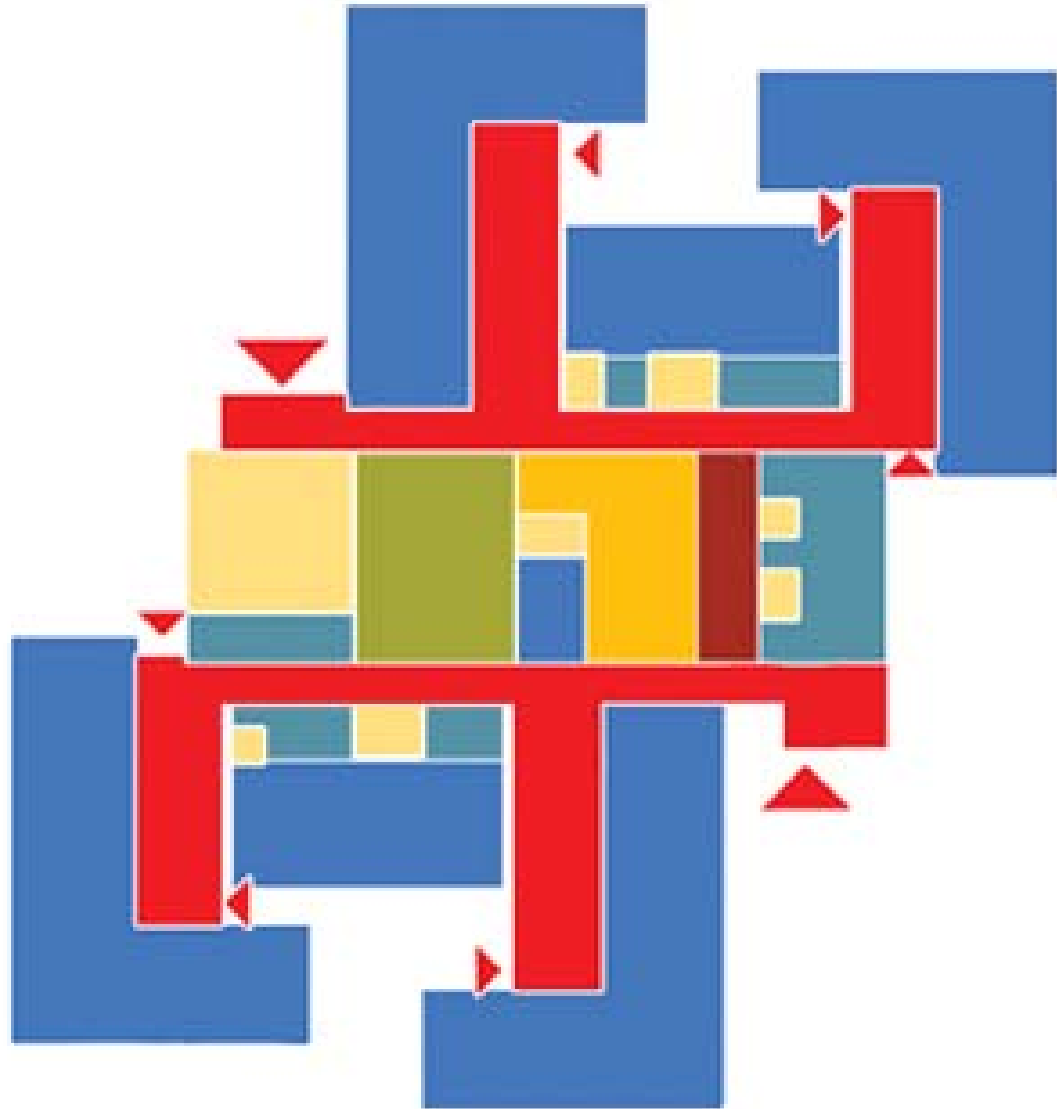


# 平面图





# 平面示意图



# Yuyu-no-mori Nursery School and Day Nursery

规模：200人

建筑面积：1400 M<sup>2</sup>

建成：2006年

地点：横滨，日本

设计：Environment Design Institute

总造价：400万美元

# 蹦床



# 外观



# 入口外观



## 多样化采光的教室

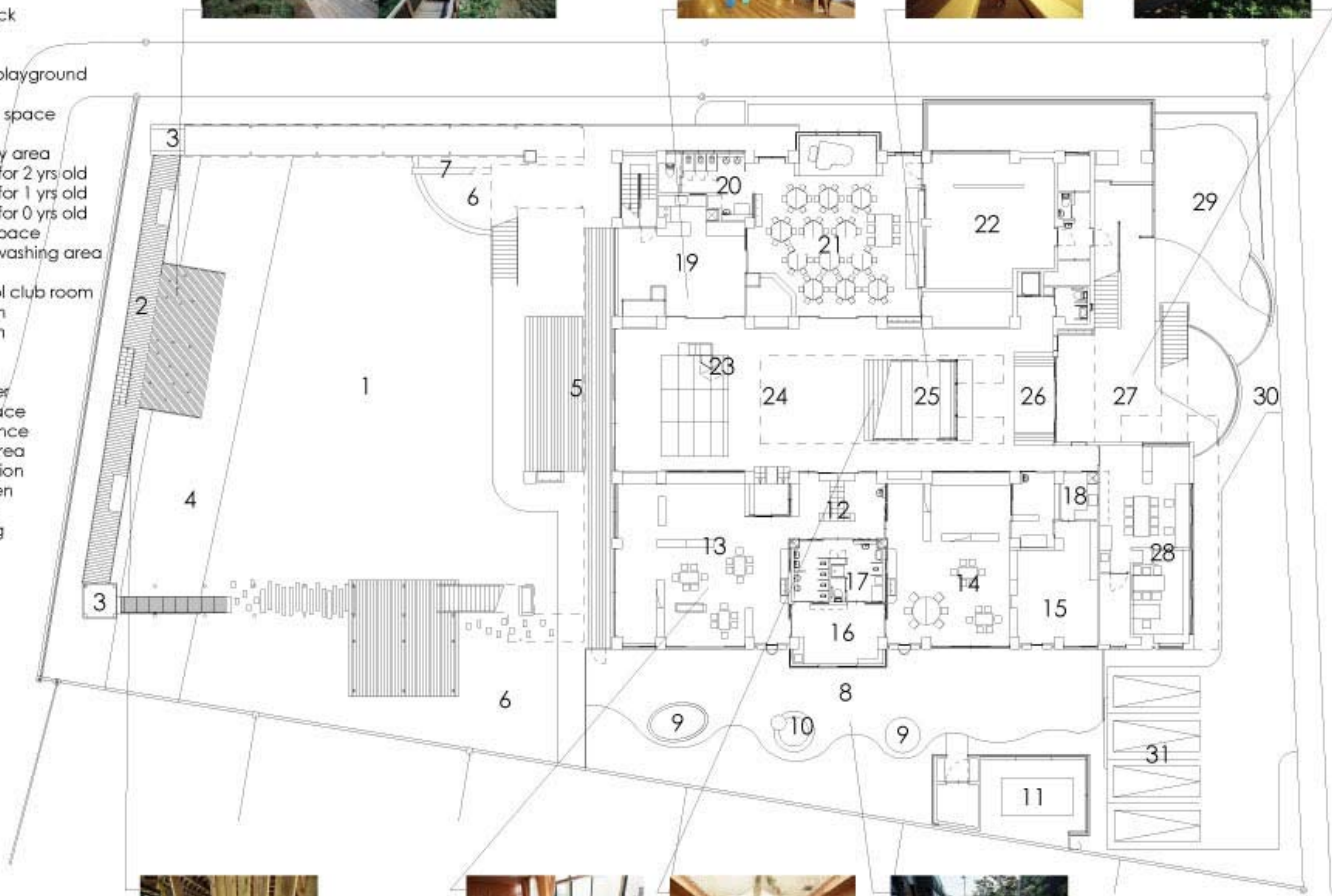


# 户外游乐场



# 首层平面图

- 1 Nursery school playing field
- 2 Corridor wooden play structure
- 3 Symbolic tower
- 4 Slope
- 5 Wooden deck
- 6 Sand pit
- 7 Slide
- 8 Day nursery playground
- 9 Sand pit
- 10 Hand wash space
- 11 Storage
- 12 Day nursery area
- 13 Classroom for 2 yrs old
- 14 Classroom for 1 yrs old
- 15 Classroom for 0 yrs old
- 16 Teachers' space
- 17 Toilet and washing area
- 18 Milk room
- 19 After school club room
- 20 Mini-kitchen
- 21 Lunch room
- 22 Kitchen
- 23 Stairs
- 24 Hall+Theater
- 25 Waiting space
- 26 Main entrance
- 27 Entrance area
- 28 Administration
- 29 Front garden
- 30 Main gate
- 31 Car parking
- 32 Street



1F PLAN

2

13

24

8



# 二层平面图

- 1 Nursery school playing field
- 2 Corridor wooden play structure
- 3 Symbolic tower
- 4 Outdoor stairs
- 5 Net feature
- 6 Pergola
- 7 Slide
- 8 Semi-outdoor corridor
- 9 Classroom
- 10 Kids' entrance
- 11 Play structure 'Kids' elevator'
- 12 Kids' toilet
- 13 Teachers' office
- 14 Teachers' rest space
- 15 Stair tower
- 16 Big net play structure
- 17 Stairs
- 18 Main entrance area



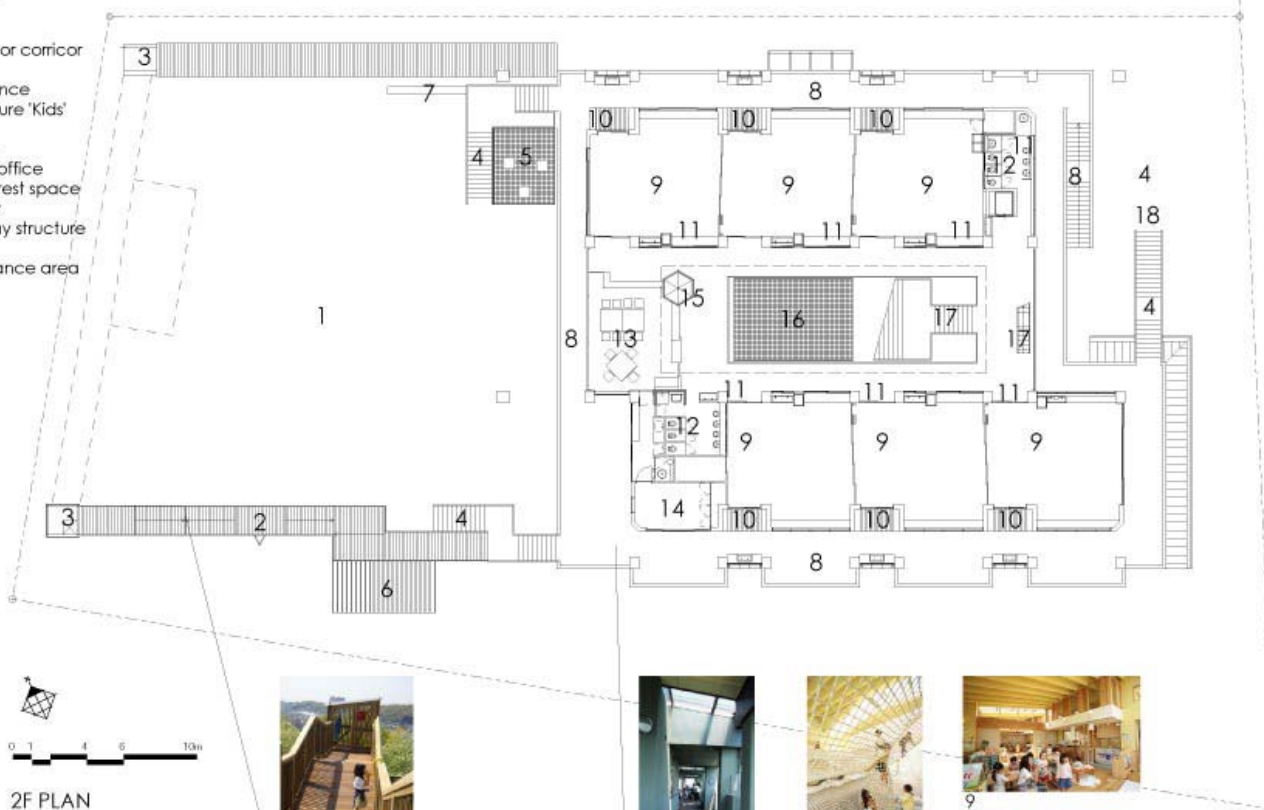
3



9



9



2F PLAN



2



8



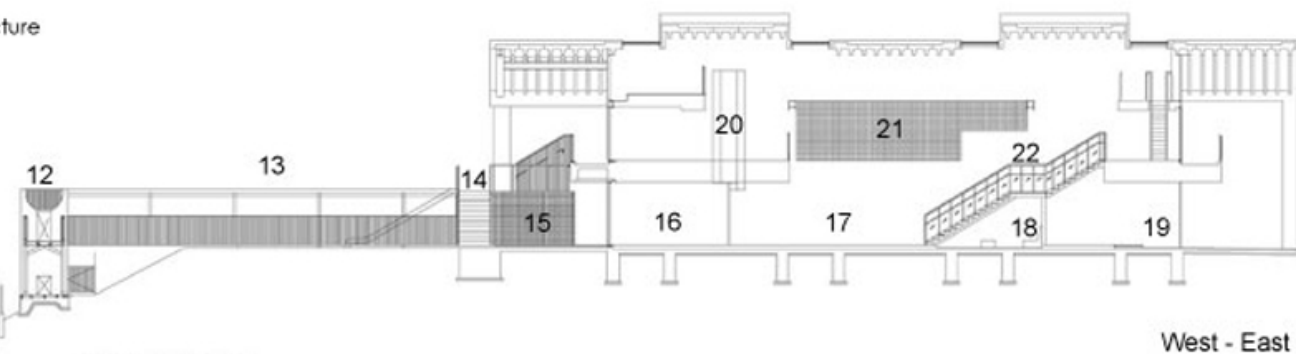
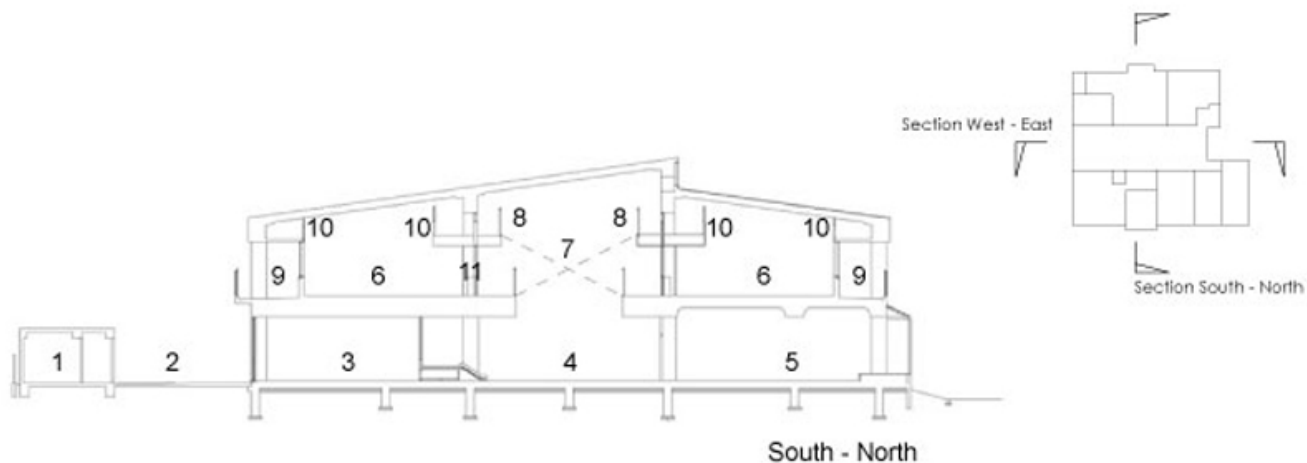
16



9

# 剖面图

- 1 Storage
- 2 Day nursery playground
- 3 After school club room
- 4 Hall/Theater
- 5 Day nursery classroom
- 6 Nursery school classroom
- 7 Slide
- 8 Cat walk
- 9 Semi-outdoor corridor
- 10 Loft
- 11 Play structure 'Kids' elevator'
- 12 Symbolic tower
- 13 Corridor play structure
- 14 Outdoor stairs
- 15 Net feature
- 16 Big net play structure
- 17 Hall/Theater
- 18 Waiting space
- 19 Entrance
- 20 Stair tower
- 21 Big net play structure
- 22 Stairs



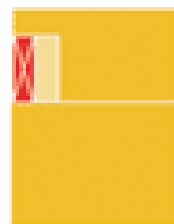
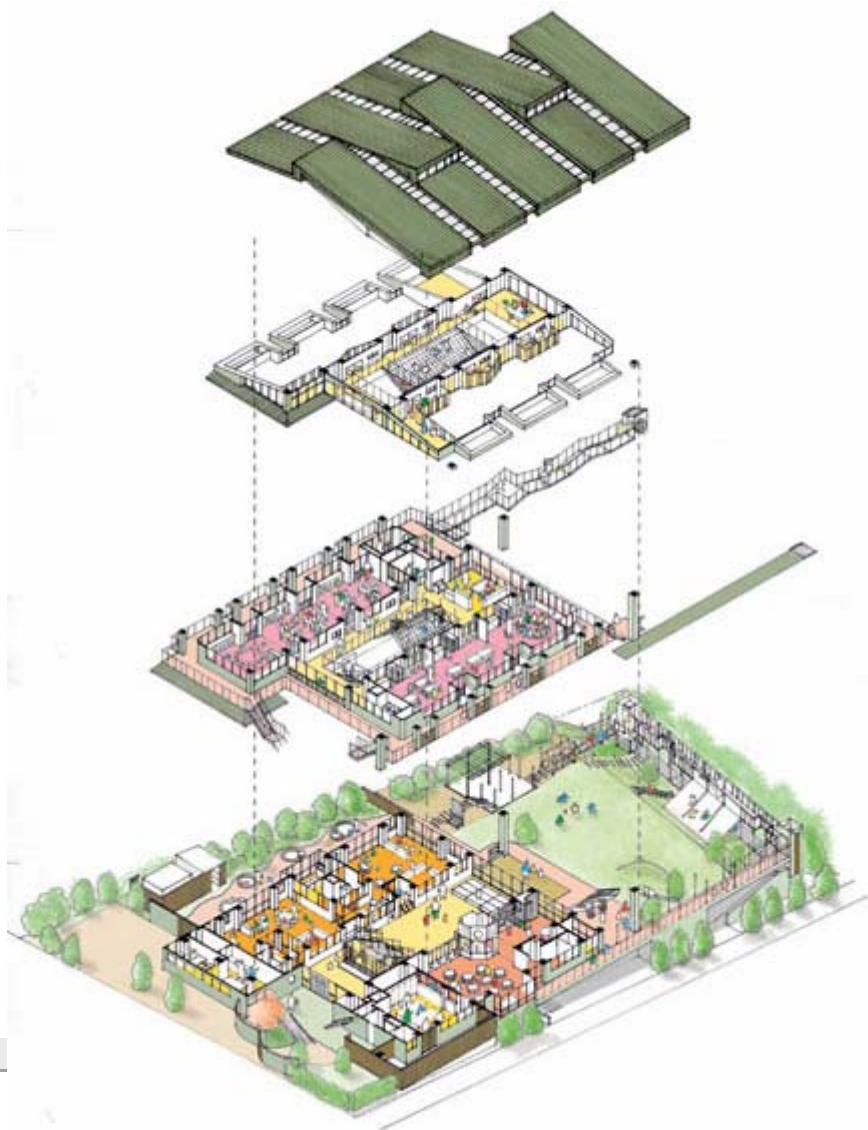
# 立面图



ELEVATION



# 轴测示意图·平面示意图



## Harris Family Children's Center

规模：58人

建筑面积：1000 M<sup>2</sup>

建成：2007年

地点：新罕布什尔州，美国

设计：Bargmann Hendrie + Archetype, Inc

总造价：210万美元

# 主立面外观



## 内庭院·室内活动中心



# 学前班教室





## 开放式厨房·封闭侧廊



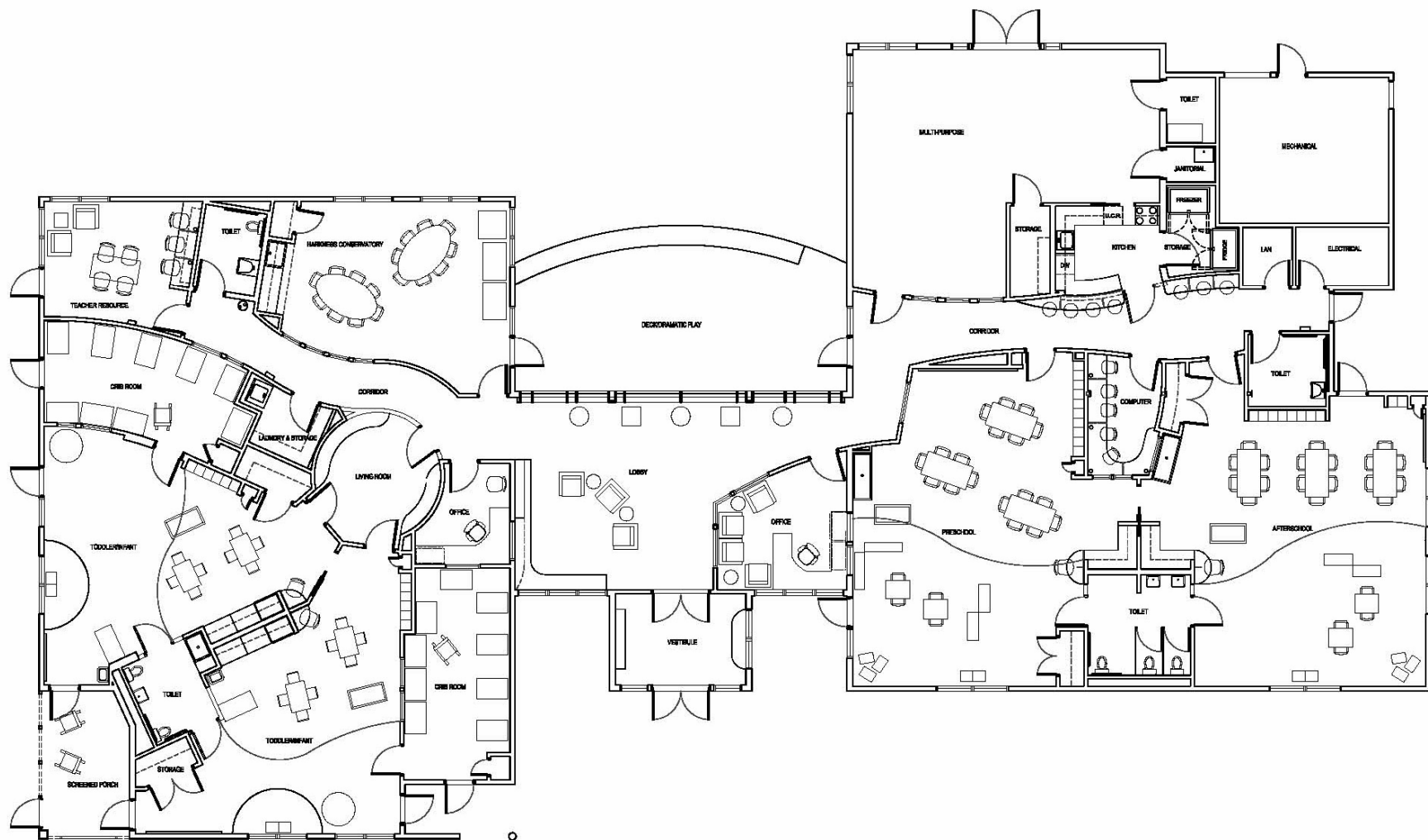
# 婴幼儿房间·细部



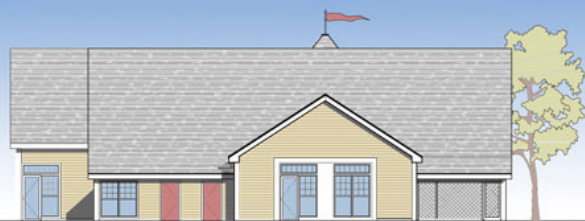
# 总平面



# 家具平面布置图



# 立面图



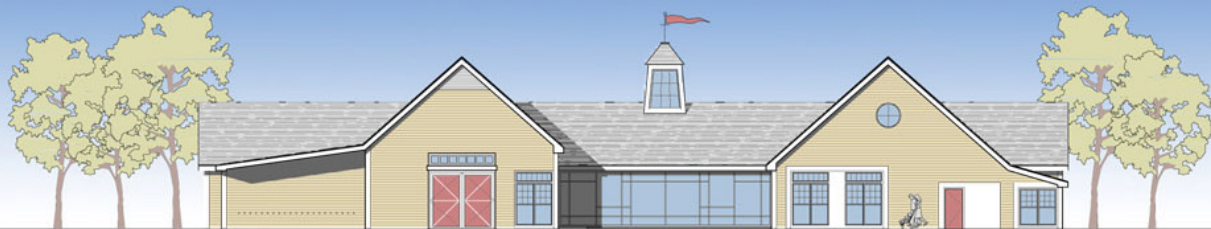
① NORTH ELEVATION



② WEST ELEVATION - WATER STREET



③ SOUTH ELEVATION



④ EAST ELEVATION

# 平面示意图

